

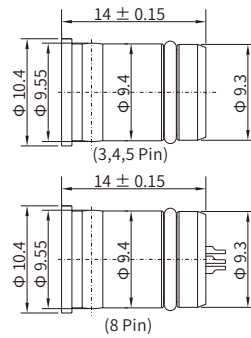
M12 A-coding (Sensor and Actuator)

M12 A-coding Straight Connector, Plastic Housing with O-ring

Male Solder



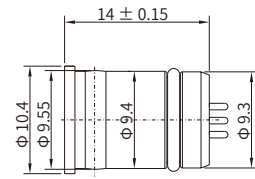
CE RoHS



Male PCB Type



CE RoHS



Specifications

Contacts	3	4	5	8
Pin layout(Male)				
Standard	IEC 61076-2-101			
Ambient temperature	-20°C ~ +90°C			
Connector insert	PA			
Connector contacts	Brass with gold plated			
Seal/O-ring	Epoxy resin / FKM			
Insulation resistance	≥100MΩ			
Contact resistance	≤5mΩ			
Earth tag/pin	Unavailable			
IP rating	IP67, IP68 in locked condition			
Mating endurance	>500 cycles			
Rated current	4 A		2A	
Rated voltage	250V AC/DC		60V AC/DC 30V AC/DC	

Part Number

Pins	Male	
	Solder	PCB Type
3	M12H-MSA03	M12H-MBA03
4	M12H-MSA04	M12H-MBA04
5	M12H-MSA05	M12H-MBA05
8	M12H-MSA08	M12H-MBA08